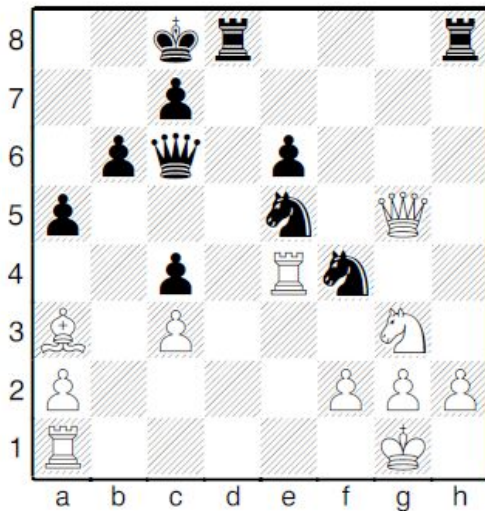


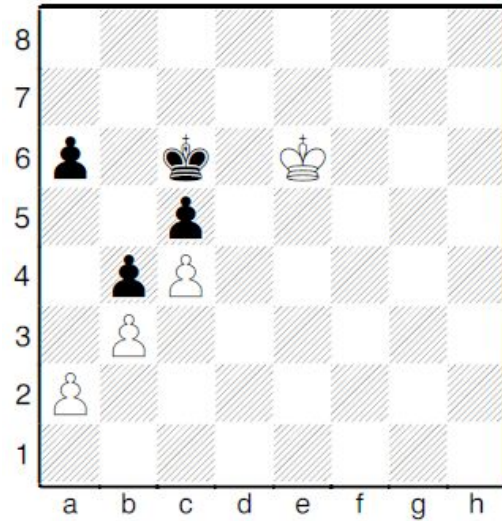
Eenvoudige opgaven

(1) Zwart speelt en wint



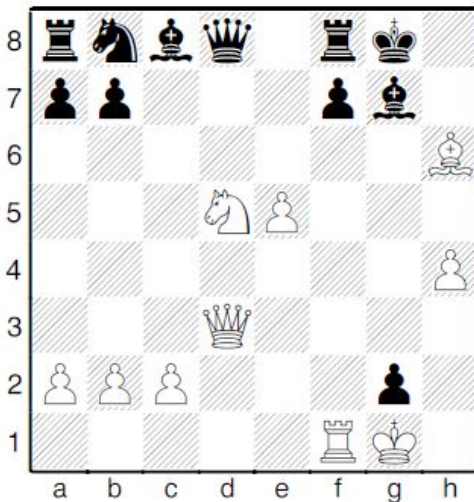
Blees - Muse (Boedapest, 1985)

(2) Zwart speelt en houdt remise



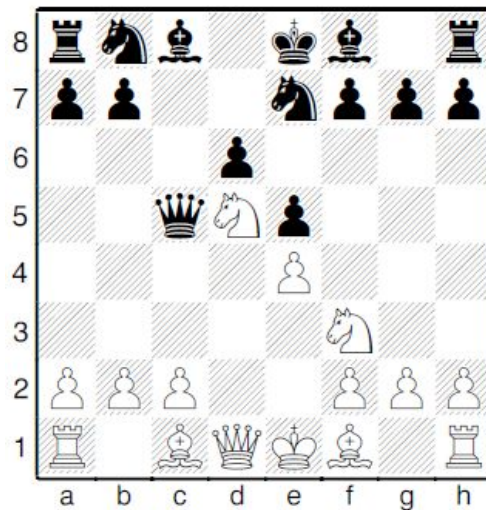
Nikaloevski - Taimanov (Tallinn, 1966)

(3) Wit speelt en wint



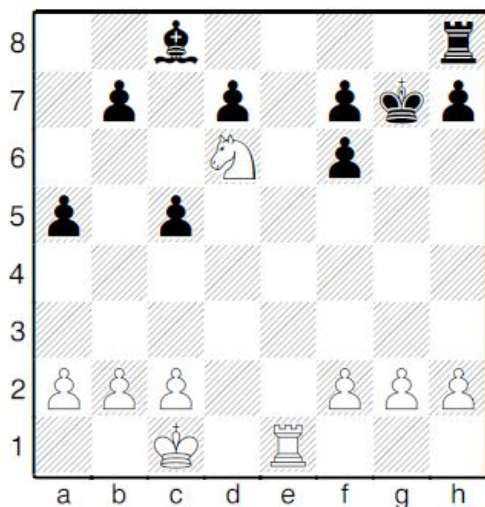
- N.N. (Warschau, 1913)

(4) Wit speelt en wint



Kraus- Costin (Zwitserland, 1938)

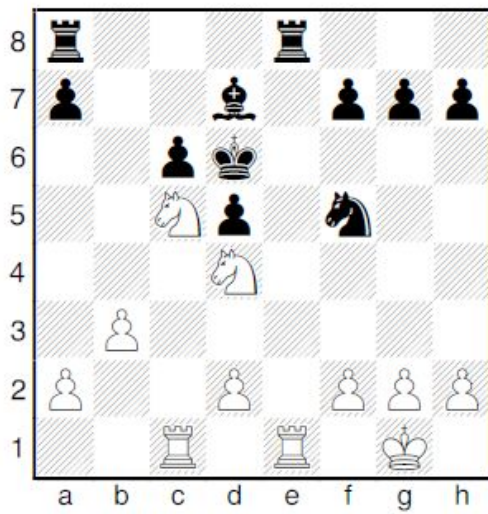
(5) Wit speelt en wint



Badals - Franco (Lyon, 1990)

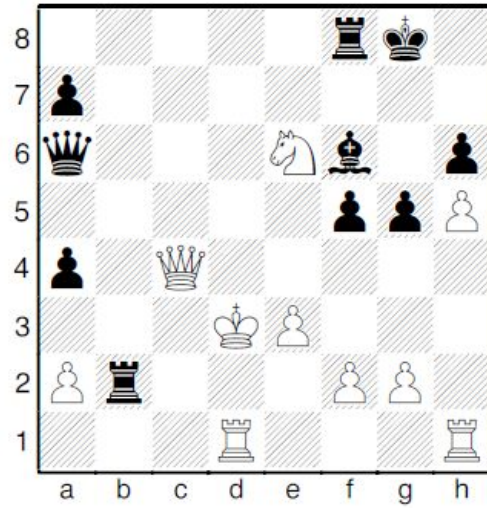
Gemiddelde opgaven

(6) Wit speelt en wint



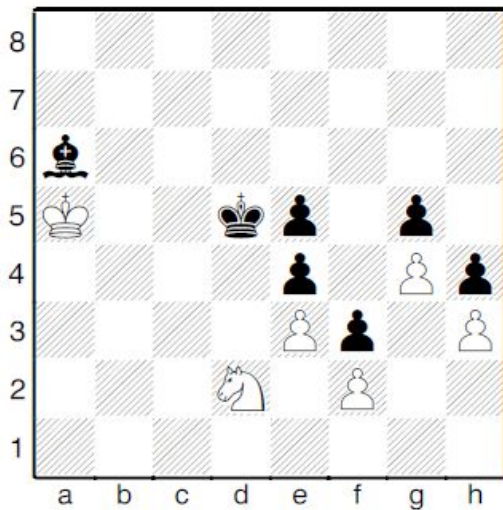
Lokasto - Zakrewski (Augustus, 1974)

(7) Zwart speelt en wint



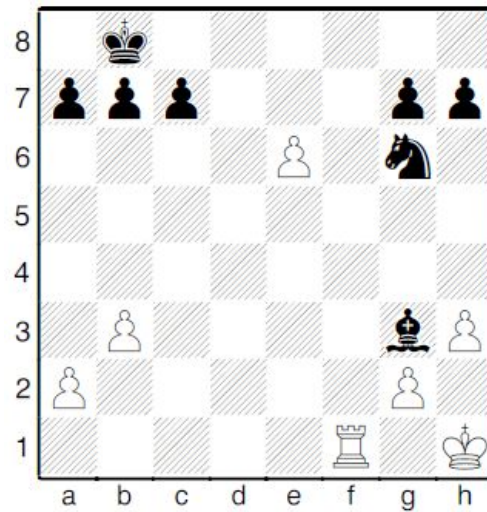
Wade - Kirow (Birmingham, 1974)

(8) Zwart speelt en wint



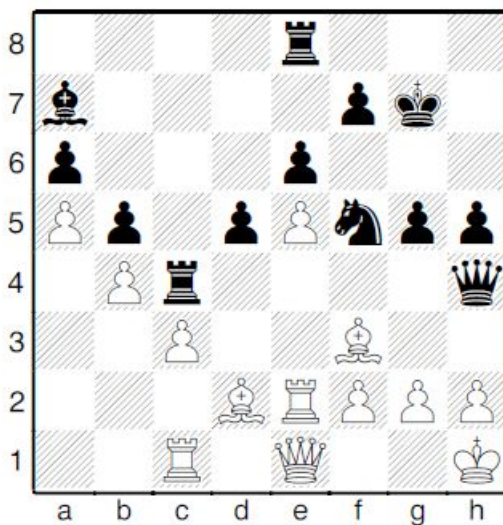
Nikolic - Timman (Wijk aan Zee, 1979)

(9) Wit speelt en wint



Compositie

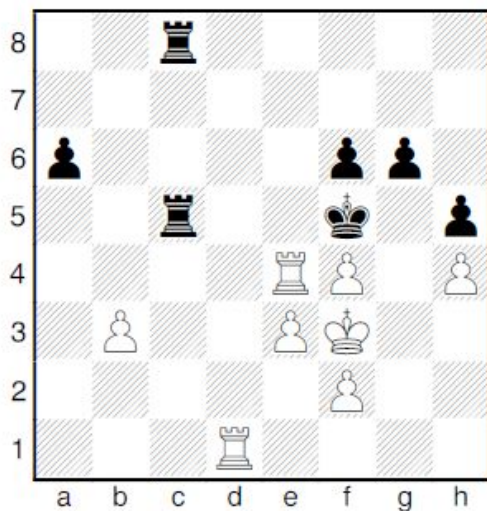
(10) Zwart speelt en wint



Reshwewski - Ivanovic (Skopje, 1976)

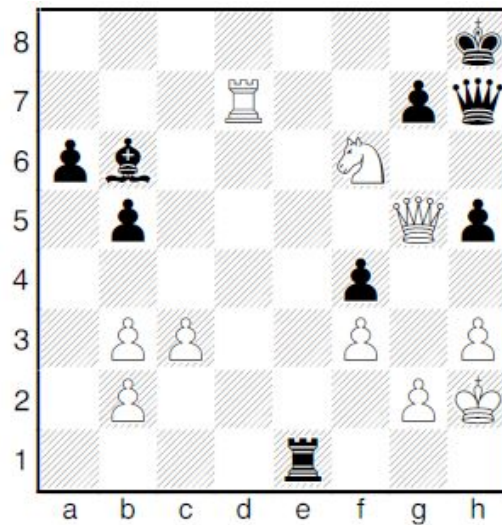
Gevorderde opgaven

(11) Wit speelt en wint



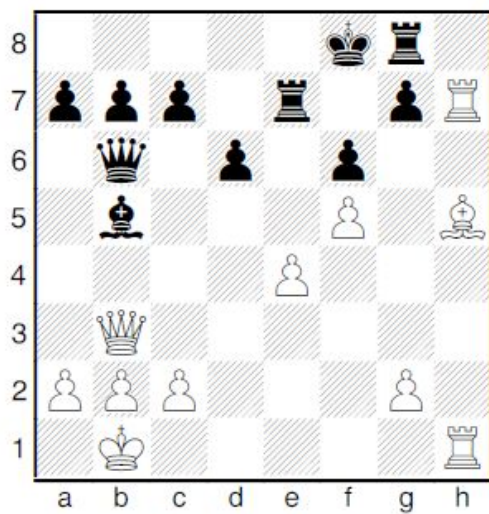
Kostyra - Morozow (Warschau, 1991)

(12) Wit speelt en wint



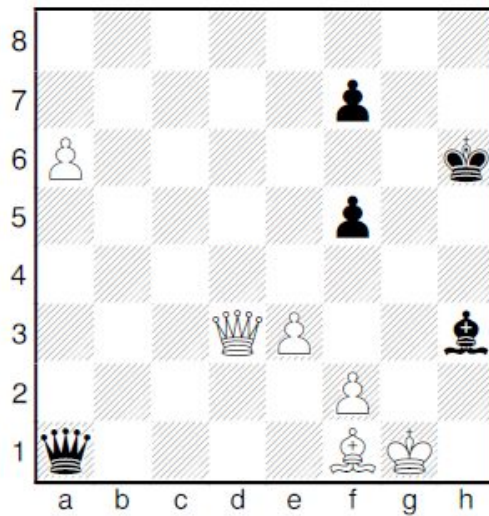
Kretschmar - Laue (Eisenach, 1951)

(13) Wit speelt en wint



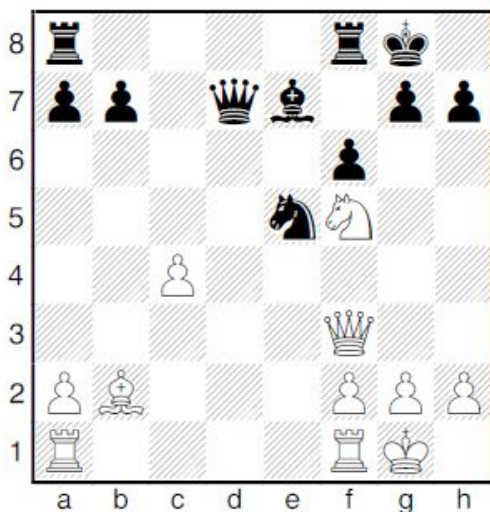
Krylow - Tarassow (USSR, 1961)

(14) Wit speelt en wint



Lputian - Spiridinov (Jerevan, 1989)

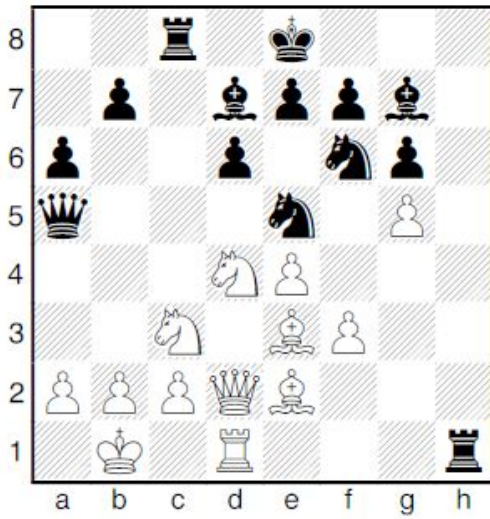
(15) Wit speelt en wint



Miles - Timman (Amsterdam, 1985)

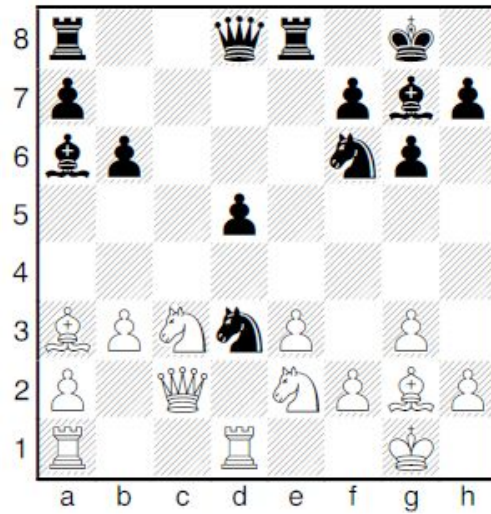
Moelijke opgaven

(16) Wit speelt en wint



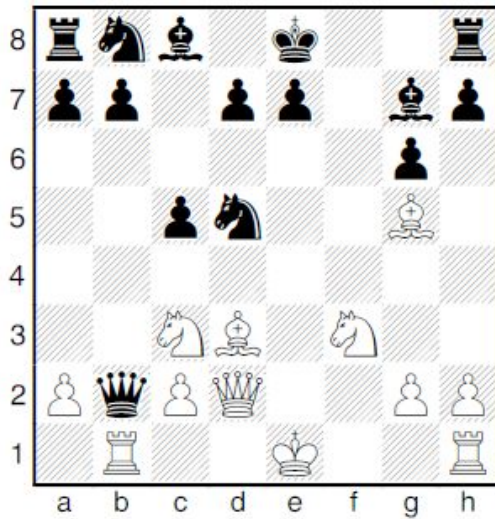
Tal - N.N. (Stuttgart, 1958)

(17) Zwart speelt en wint



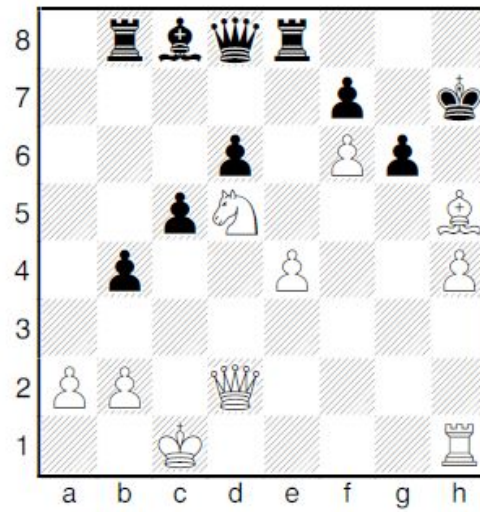
Byrne - Fischer (New York, 1963)

(18) Wit speelt en wint



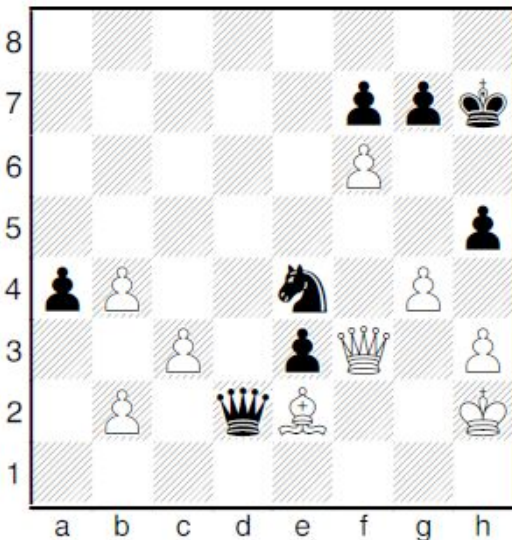
Reti - Euwe (Rotterdam, 1920)

(19) Wit speelt en wint



Rivas - Mestel (Marbella, 1982)

(20) Zwart speelt en wint



Polovdin - Zelnin (USSR, 1980)